

# My Faith Looks up to Thee

*Words: Ray Palmer, 1830*

*Music: Lowell Mason, 1830*

adapted for one octave  
diatonic handbells

by



This work was created for [www.TheInspiredInstructor.com](http://www.TheInspiredInstructor.com) and is licensed under a Creative Commons Attribution-Noncommercial-Share Alike 3.0 United States License. Permissions beyond the scope of this license may be available at [info@TheInspiredInstructor.com](mailto:info@TheInspiredInstructor.com).



# My Faith Looks up to Thee

KidsPlay™ Bells Needed:

C, D, E, F, G, A, B, C

*Includes eighth, quarter, dotted quarter, half, and whole notes*



# Get the Rhythm!



# Counting $\frac{4}{4}$ Time with Dotted Notes



1 half 2 half 3 half 4 half



1 half 2 half 3 half 4 half



1 half 2 half 3 half 4 half



1 half 2 half 3 half 4 half



4  
4

# My Faith Looks up to Thee

My faith looks up to Thee,

Thou Lamb of Cal-va-ry,

Sa-vior di-vine!


Now hear me while I pray,







4  
4

# My Faith Looks up to Thee

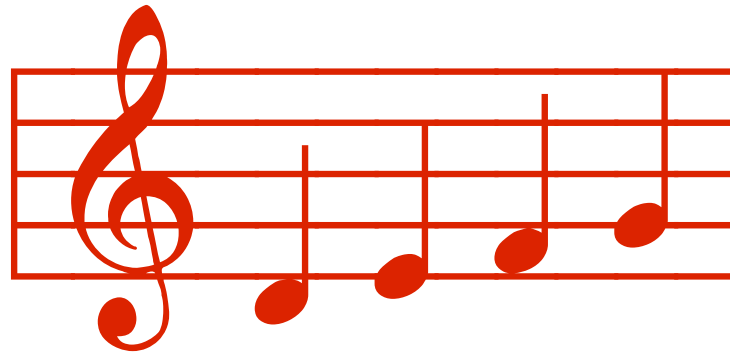
  
take all my guilt a- way,

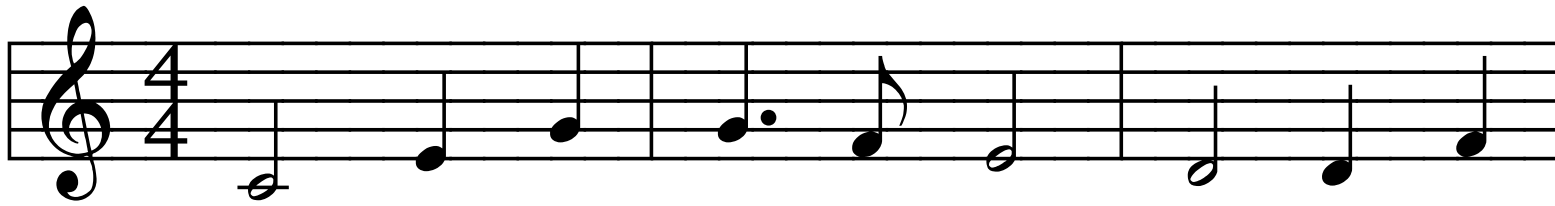
  
O let me from this day be

  
whol- ly Thine!



# Add the Tune!





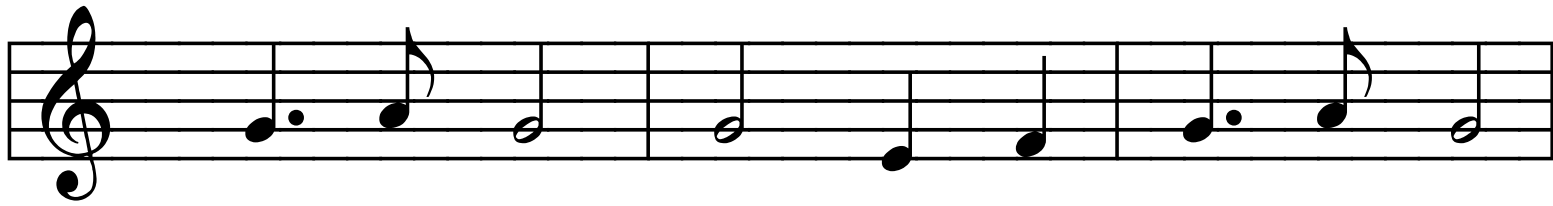
My faith looks up to Thee, Thou Lamb of



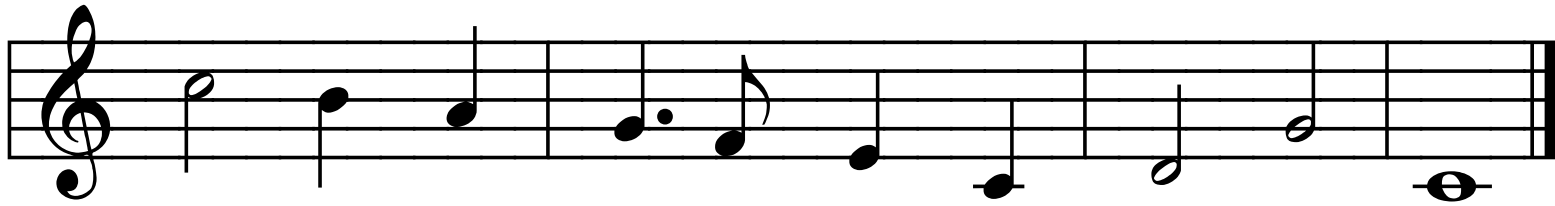
Cal-va-ry, Sa- vior di- vine! Now hear me







while I pray, take all my guilt a- way,



O let me from this day be whol- ly Thine!



Play the Melody!





My faith looks up to Thee, Thou Lamb of

A musical staff in 4/4 time with a treble clef. The melody consists of the following notes: G4 (quarter), A4 (quarter), B4 (quarter), C5 (quarter), D5 (quarter), E5 (quarter), F5 (quarter), G5 (quarter), F5 (quarter), E5 (quarter), D5 (quarter). Each note is placed on a colored vertical bar: red, yellow, teal, teal, green, yellow, orange, orange, green.

Cal-va- ry, Sa- vi- or di- vine! Now hear me

A musical staff in 4/4 time with a treble clef. The melody consists of the following notes: D5 (quarter), E5 (quarter), F5 (quarter), G5 (quarter), A5 (quarter), B5 (quarter), C6 (quarter), B5 (quarter), A5 (quarter), G5 (quarter), F5 (quarter), E5 (quarter), D5 (quarter). Each note is placed on a colored vertical bar: green, yellow, orange, yellow, orange, blue, teal, teal, yellow, green. The words "va-", "ry,", "Sa-", "vi-", and "or" are underlined with red wavy lines.



while I pray, take all my guilt a- way,

A musical staff in treble clef with a key signature of one flat. The notes are: G4 (quarter), A4 (quarter), B4 (quarter), C5 (quarter), D5 (quarter), E5 (quarter), F5 (quarter), G5 (quarter), A5 (quarter). Colored vertical bars are placed behind each note: teal, dark blue, teal, teal, yellow, green, teal, dark blue, teal.

O let me from this day be whol- ly Thine!

A musical staff in treble clef with a key signature of one flat. The notes are: G4 (quarter), A4 (quarter), B4 (quarter), C5 (quarter), D5 (quarter), E5 (quarter), F5 (quarter), G5 (quarter), A5 (quarter), B5 (quarter), C6 (quarter). Colored vertical bars are placed behind each note: red, purple, dark blue, teal, green, yellow, red, orange, teal, red.



Presentation by  
Heidi Schmidt

© 2016 TheInspiredInstructor.com

For more free music presentations, visit  
TheInspiredInstructor.com

[www.fontspace.com/robert-allgeyer/musiqwik](http://www.fontspace.com/robert-allgeyer/musiqwik)

[www.fontspace.com/ryan-neaveill/music-fun](http://www.fontspace.com/ryan-neaveill/music-fun)

[www.grsites.com](http://www.grsites.com) - Absolute Backgrounds

[www.OpenOffice.org](http://www.OpenOffice.org)

[www.anvilstudio.com](http://www.anvilstudio.com)