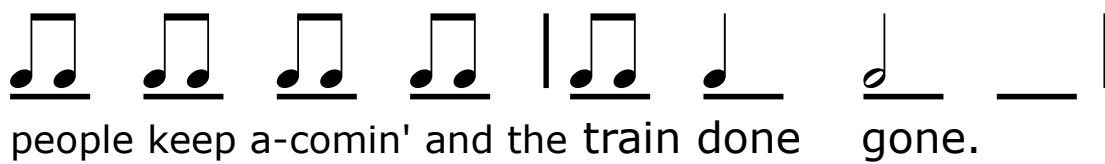
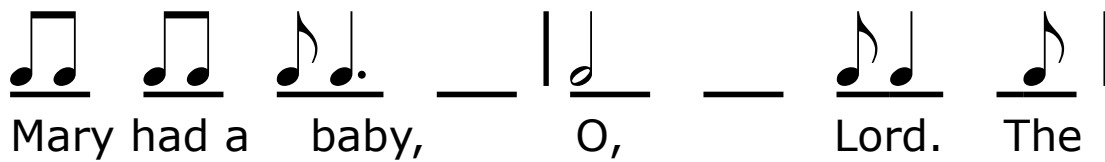
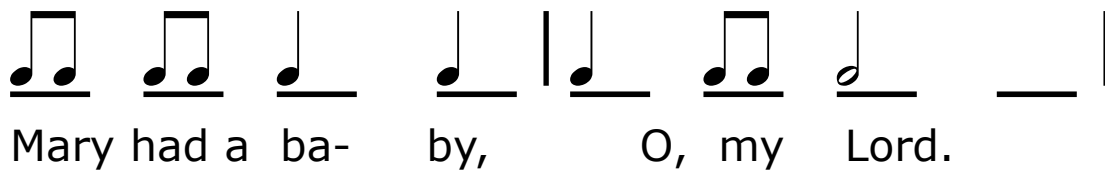
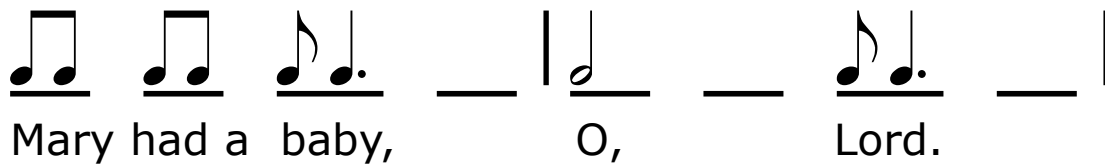


Mary Had a Baby



Mary Had a Baby

The image shows the musical notation for the song 'Mary Had a Baby' on a four-line staff. The notation is as follows:

- Line 1: Quarter note G4, quarter note A4, quarter note B4 with a dot, a whole rest, a vertical bar line, a half note G4, a whole rest, a quarter note A4 with a dot, a whole rest, a vertical bar line.
- Line 2: Quarter note G4, quarter note A4, quarter note B4, quarter note A4, a vertical bar line, quarter note G4, quarter note A4, quarter note B4, quarter note A4, a vertical bar line.
- Line 3: Quarter note G4, quarter note A4, quarter note B4 with a dot, a whole rest, a vertical bar line, a half note G4, a whole rest, a quarter note A4 with a dot, a quarter note B4, a vertical bar line.
- Line 4: Quarter note G4, quarter note A4, quarter note B4, quarter note A4, a vertical bar line, quarter note G4, quarter note A4, quarter note B4, a whole rest, a vertical bar line.

