



# B-I-N-G-O

*Traditional Children's Song*

adapted for one octave  
diatonic handbells  
by



This work was created for [www.TheInspiredInstructor.com](http://www.TheInspiredInstructor.com) and is licensed under a Creative Commons Attribution-Noncommercial-Share Alike 3.0 United States License. Permissions beyond the scope of this license may be available at [info@TheInspiredInstructor.com](mailto:info@TheInspiredInstructor.com).



B-I-N-G-O

KidsPlay™ Bells Needed:

D, E, G, A, B, C

*Introduces the key of G*



# Get the Rhythm!



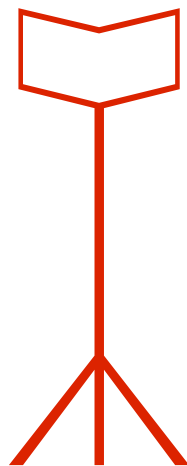






A musical staff with three systems of notation. Each system consists of a horizontal line with vertical stems and notes. The first system has four measures: a quarter note, a quarter note, a half note, and a whole rest. The second system has four measures: a quarter note, a quarter note, a quarter note, and a quarter note. The third system has four measures: a half note, a whole rest, a quarter note with a fermata, and a whole rest. Bar lines separate the measures within each system.





Add the Lyrics!







  
There was a farmer who


  
had a dog and Bing-o was his


  
Name Oh B- I-

  
N- G- O B- I-




  
N- G- O \_\_\_\_\_ |

  
B- \_\_\_\_\_ I- \_\_\_\_\_ |

  
N- G- O and \_\_\_\_\_ |

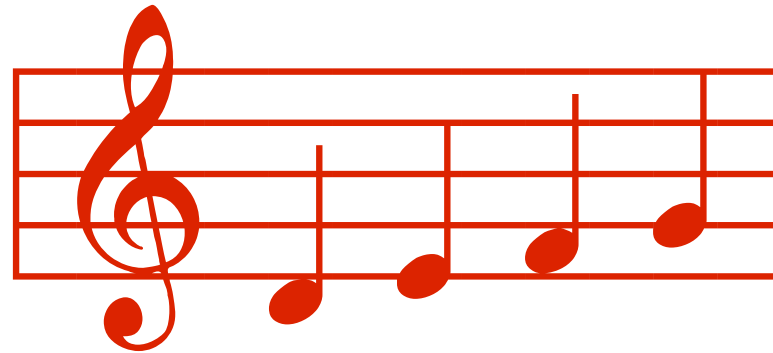
  
Bing- o was his \_\_\_\_\_ |

  
name \_\_\_\_\_ Oh! \_\_\_\_\_ |





# Add the Tune!





There was a farmer who had a dog, and



Bing- o was his name oh! B- I-





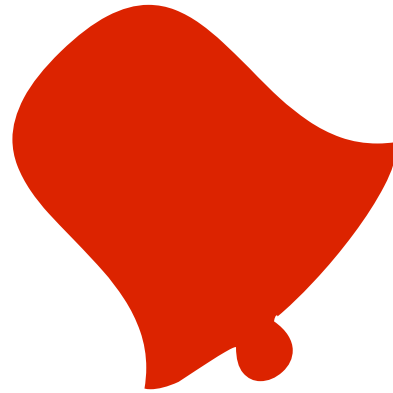
N- G- O! B- I- N- G- O! B- I-

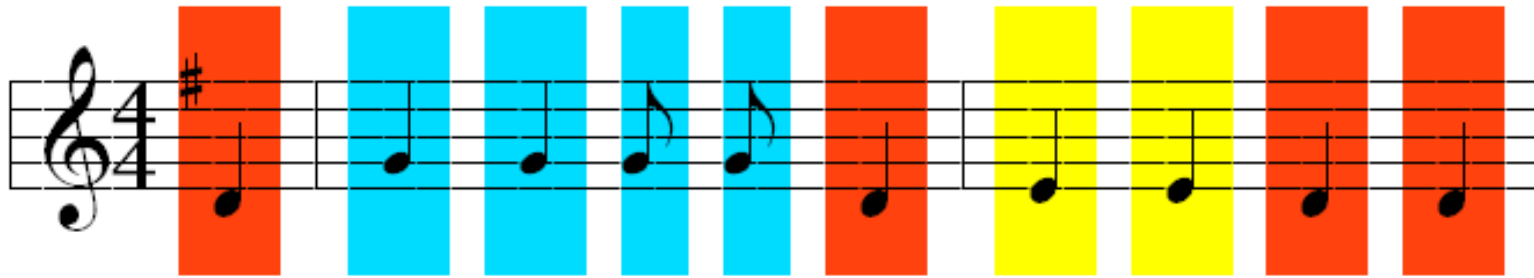


N- G- O! And Bing- o was his name oh!

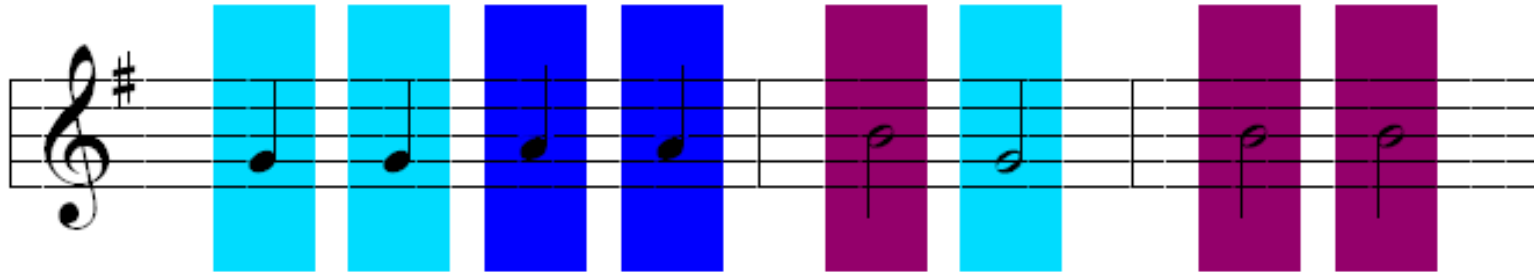


Play the Melody!





There was a farmer who had a dog, and



Bing- o was his name oh! B- I-



The image displays two staves of musical notation for the song "Bingo". The first staff contains the lyrics "N- G- O! B- I- N- G- O! B- I-". The second staff contains the lyrics "N- G- O! And Bing- o was his name oh!". Each syllable in the lyrics is aligned with a colored vertical bar on the staff. The colors are: red for "N-", blue for "G-", purple for "O!", cyan for "B-", orange for "I-", yellow for "N-", green for "G-", light blue for "O!", and dark blue for "B-". The final "I-" in the second staff is also dark blue. The musical notes are quarter notes on a treble clef staff with a key signature of one sharp (F#).

N- G- O! B- I- N- G- O! B- I-

N- G- O! And Bing- o was his name oh!



For more Screen Music Presentations  
visit

[www.TheInspiredInstructor.com](http://www.TheInspiredInstructor.com)

The Inspired Instructor wishes to  
thank the following for the  
use of their free tools:

[www.fontspace.com/robert-allgeyer/musiqwik](http://www.fontspace.com/robert-allgeyer/musiqwik)

[www.fontspace.com/ryan-neaveill/music-fun](http://www.fontspace.com/ryan-neaveill/music-fun)

[www.grsites.com](http://www.grsites.com) - Absolute Backgrounds

[www.OpenOffice.org](http://www.OpenOffice.org)

[www.anvilstudio.com](http://www.anvilstudio.com)